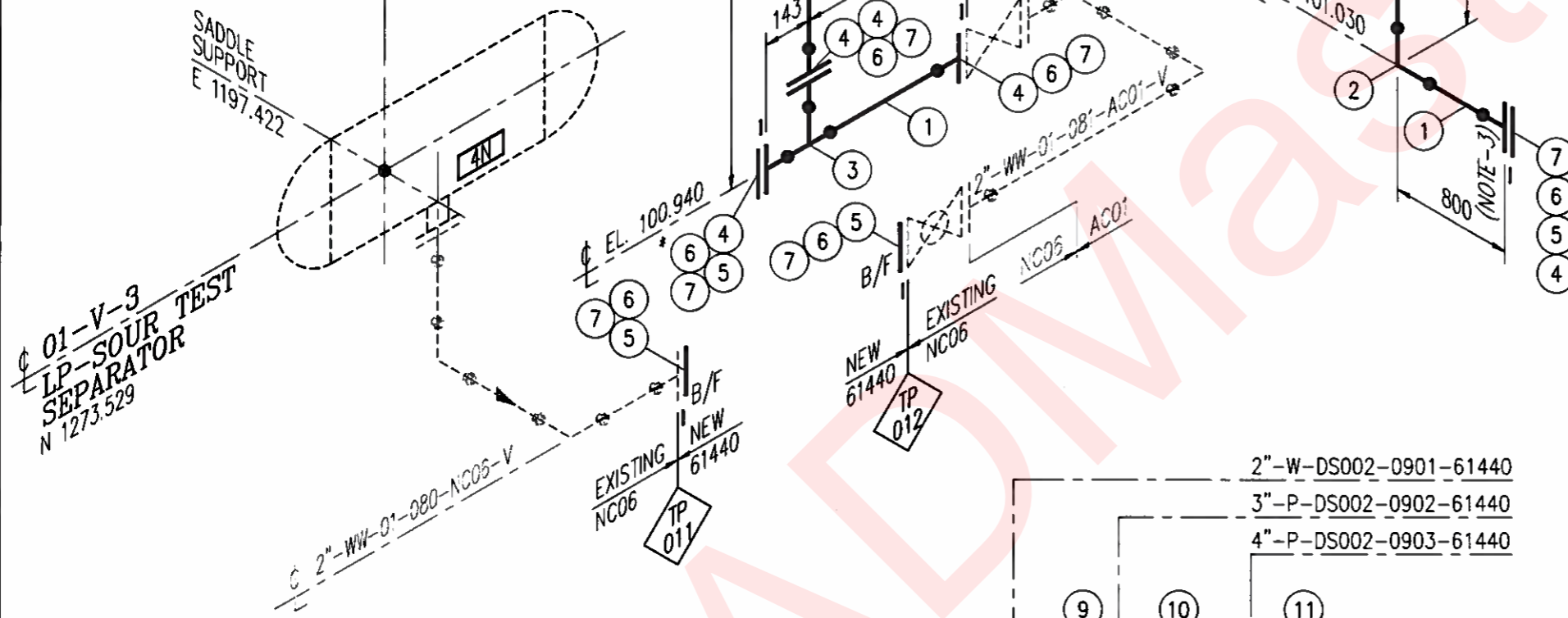
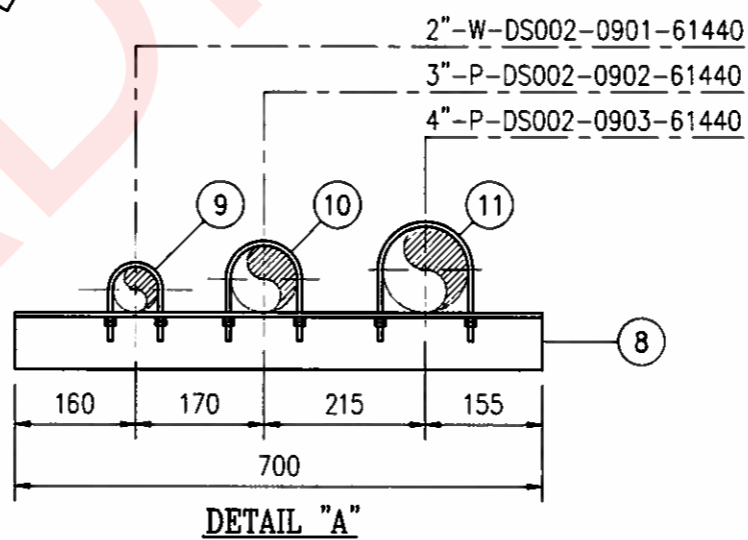


PLANT NORTH

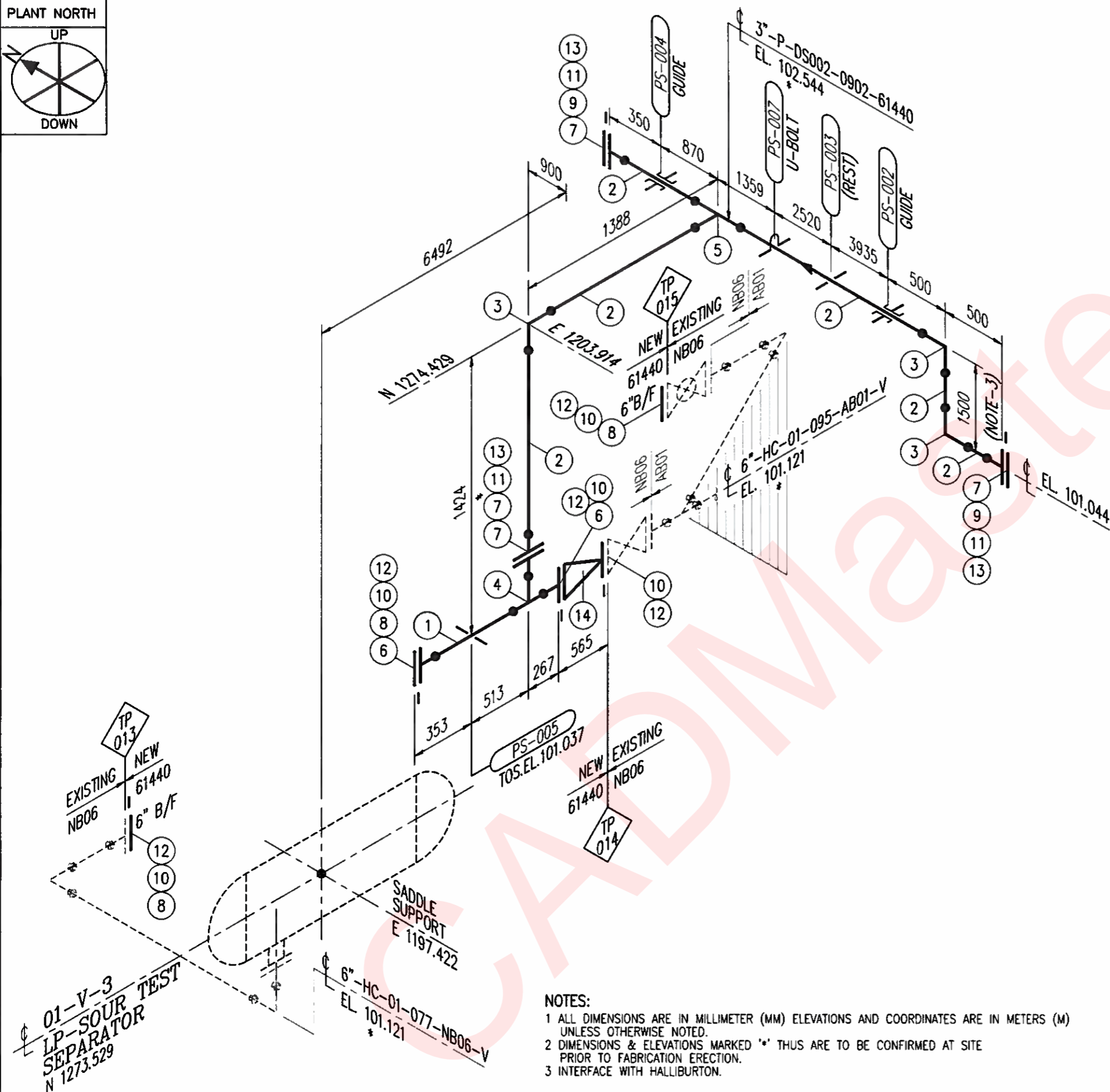


NOTES:  
 1 ALL DIMENSIONS ARE IN MILLIMETER (MM) ELEVATIONS AND COORDINATES ARE IN METERS (M) UNLESS OTHERWISE NOTED.  
 2 DIMENSIONS & ELEVATIONS MARKED '\*' THIS ARE TO BE CONFIRMED AT SITE PRIOR TO FABRICATION ERECTION.  
 3 INTERFACE WITH HALLIBURTON.



REV.	ITEM No.	QTY.	UNIT	DESCRIPTION	MESC No.
	1	10.7	M T R	2" PIPE, SMLS SCH.160 ASTM A106-B	7 4 3 0 0 3 0 7 3 1
	2	4	P I C S	2" ELBOW, 90° LR BW SMLS SCH.160 ASTM A234-WPB	7 6 3 1 0 4 2 6 1 1 2 1
	3	1	P I C S	2" TEE, EQUAL BW SMLS SCH.160 ASTM-A234-WPB	7 6 3 0 8 1 6 1 2 1
	4	5	P I C S	2" FLANGE, 600# WNRF SCH.160 ASTM A105	7 6 6 2 7 9 8 1 1 0 1
	5	4	P I C S	2" FLANGE, BLIND 600# RF ASTM A105	7 6 6 2 1 0 2 2 0 1
	6	6	P I C S	2" GASKET, 600# SPIRAL WOUND, AISI 316 GRAPHITE CS CENTRING-/SS INNER RING	8 5 4 1 3 6 4 1 4 1
	7	48	P I C S	5/8"x110 LG STUD BOLTS W/NUTS ASTM A193-B7M/A194-2HM	8 1 3 8 6 6 2 7 4 1
	8	1	P I C S	75x75x6mm THK. x 700mm LONG ANGLE ASTM A-36	
	9	1	P I C S	U BOLT W/NUTS FOR 2" PIPE ASTM A193-B7/A194 2H	
	10	1	P I C S	U BOLT W/NUTS FOR 3" PIPE ASTM A193-B7/A194 2H	
	11	1	P I C S	U BOLT W/NUTS FOR 4" PIPE ASTM A193-B7/A194 2H	

NORM. OP. TEMP. 40-60°C	DES. TEMP. 121°C	DES. PRESS. 91.7 Barg
TEST. PRESS. 137.55 Barg	TRACE N/A	COAT & WRAP N/A
PAINT -	INSULATION N/A	STRESS SKETCH -
STRESS RELIEF -	P & ID S01-DS002-PTPS-21-PX-2365-00102	CLASS 61440
NDE 100%	AREA DS2	
PIPING GA 425143-04-EP33-001	LINE No. 2"-W-DS002-0901-61440	



REV.	ITEM No.	QTY.	UNIT	DESCRIPTION	MESC No.
	1	0.6	M T R	6" PIPE, SMLS SCH.80 ASTM A106-B	7 4 3 0 0 3 2 1 9 1
	2	14.5	M T R	3" PIPE, SMLS SCH.80 ASTM A106-B	7 4 3 0 0 3 1 0 9 1
	3	3	P C S	3" ELBOW, 90° LR BW SMLS SCH.80 ASTM A234-WPB	7 6 3 0 4 2 6 2 8 1
	4	1	P C S	6"x3" TEE, REDUCING BW SMLS SCH.80 ASTM-A234-WPB	7 6 3 0 8 8 1 7 8 1
	5	1	P C S	3" TEE, EQUAL BW SMLS SCH.80 ASTM-A234-WPB	7 6 3 0 8 1 6 2 8 1
	6	2	P C S	6" FLANGE, 600# WNRF SCH.80 ASTM A105	7 6 6 2 7 9 7 6 6 1
	7	4	P C S	3" FLANGE, 600# WNRF SCH.80 ASTM A105	7 6 6 2 7 9 7 6 2 1
	8	3	P C S	6" FLANGE, BLIND 600# RF ASTM A105	7 6 6 2 1 0 2 2 6 1
	9	2	P C S	3" FLANGE, BLIND 600# RF ASTM A105	7 6 6 2 1 0 2 2 2 1
	10	5	P C S	6" GASKET, 600# SPIRAL WOUND, AISI 316 GRAPHITE CS CENTRING-SS INNER RING	8 5 4 1 3 6 4 2 4 1
	11	3	P C S	3" GASKET, 600# SPIRAL WOUND, AISI 316 GRAPHITE CS CENTRING-SS INNER RING	8 5 4 1 3 6 4 1 8 1
	12	60	P C S	1"x180 LG STUD BOLTS W/NUTS ASTM A193-B7M/A194-2HM	8 1 3 8 6 6 4 7 5 1
	13	24	P C S	3/4"x130 LG STUD BOLTS W/NUTS ASTM A193-B7M/A194-2HM	8 1 3 8 6 6 3 3 4 1
	14	1	P C S	6" CHECK VALVE, 600# RF AISI 316, STELLITE ASTM A105/A216-WCB/WCC	7 7 1 0 0 5 1 1 4 1

NORM. OP. TEMP. 40-60°C	DES. TEMP. 121°C	DES. PRESS. 91.7 Barg
TEST. PRESS. 137.55 Barg	TRACE N/A	COAT & WRAP N/A
PAINT -	INSULATION N/A	STRESS SKETCH -
STRESS RELIEF -	P & ID S01-DS002-PEPS-27-PX-2365-00102	CLASS 61440
NDE 100%	AREA DS2	
PIPING GA 425143-04-EP33-001	LINE No. 3"-P-DS002-0902-61440	

NOTES:  
 1 ALL DIMENSIONS ARE IN MILLIMETER (MM) ELEVATIONS AND COORDINATES ARE IN METERS (M) UNLESS OTHERWISE NOTED.  
 2 DIMENSIONS & ELEVATIONS MARKED '\*' THUS ARE TO BE CONFIRMED AT SITE PRIOR TO FABRICATION ERECTION.  
 3 INTERFACE WITH HALLIBURTON.